



## MOHEDA CRANE WITH LONG REACH AND STRENGTH.

**K41T is a strong and robust crane, built for tough challenges in the forest.**

Moheda K41T is intended for Moheda forest trailers M101, M121, M101-4WD and M121- 4WD.

The K41T crane is a flexible and strong crane with that extra reach. It is equipped with telescopic boom and has a reach of 6.5 m. K41T lifts 365 kg at full reach, 920 kg at 4 m and has a slew torque of 8.5 kNm.

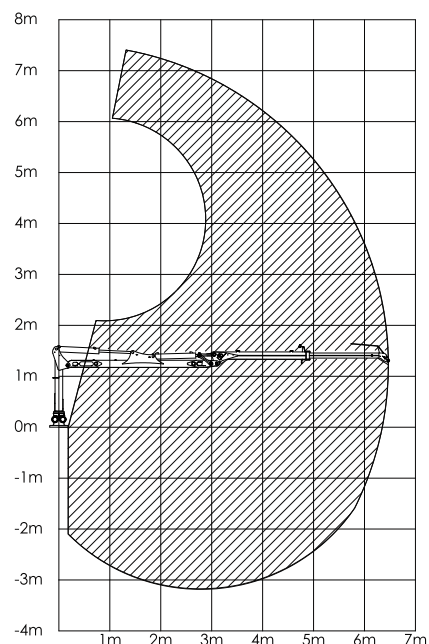
It has a linkage system for a better movement pattern and a smoother crane control. The overhead cylinders are well protected and provide good lifting torque within the working area.

As standard, the crane is equipped with CR300 rotator, FB190 grapple and multi-lever valve. There are also numerous valve packages and accessories to choose from.

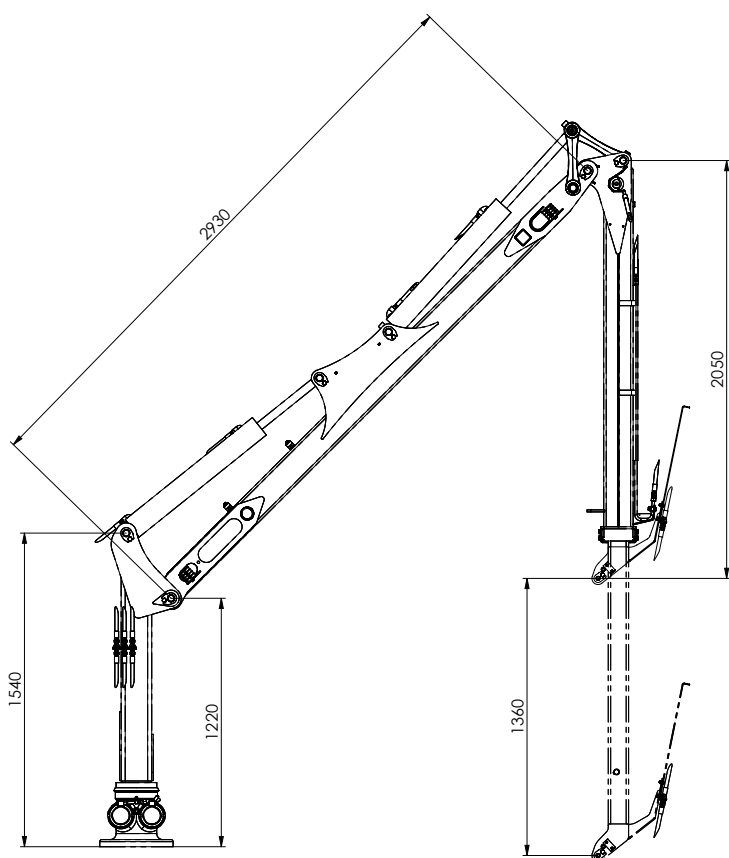




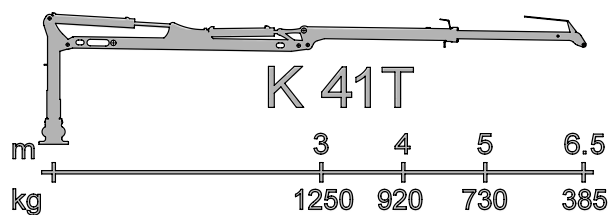
Reach diagram



Dimension details



Lift capacity



Technical data

<b>K41T</b>	
Reach (m)	6,5
Lift torque (kNm)	33
Lift capacity, max reach (kg)	385
Lift capacity, 4m (kg)	920
Slew torque (kNm)	8,5
Slew angle	360 °
Rec. oil flow (l/min) 4	30-40
Working pressure (bar)	180
Weight without grapple and rotator (kg)	640



Scan the QR code  
for more information  
about K41T crane