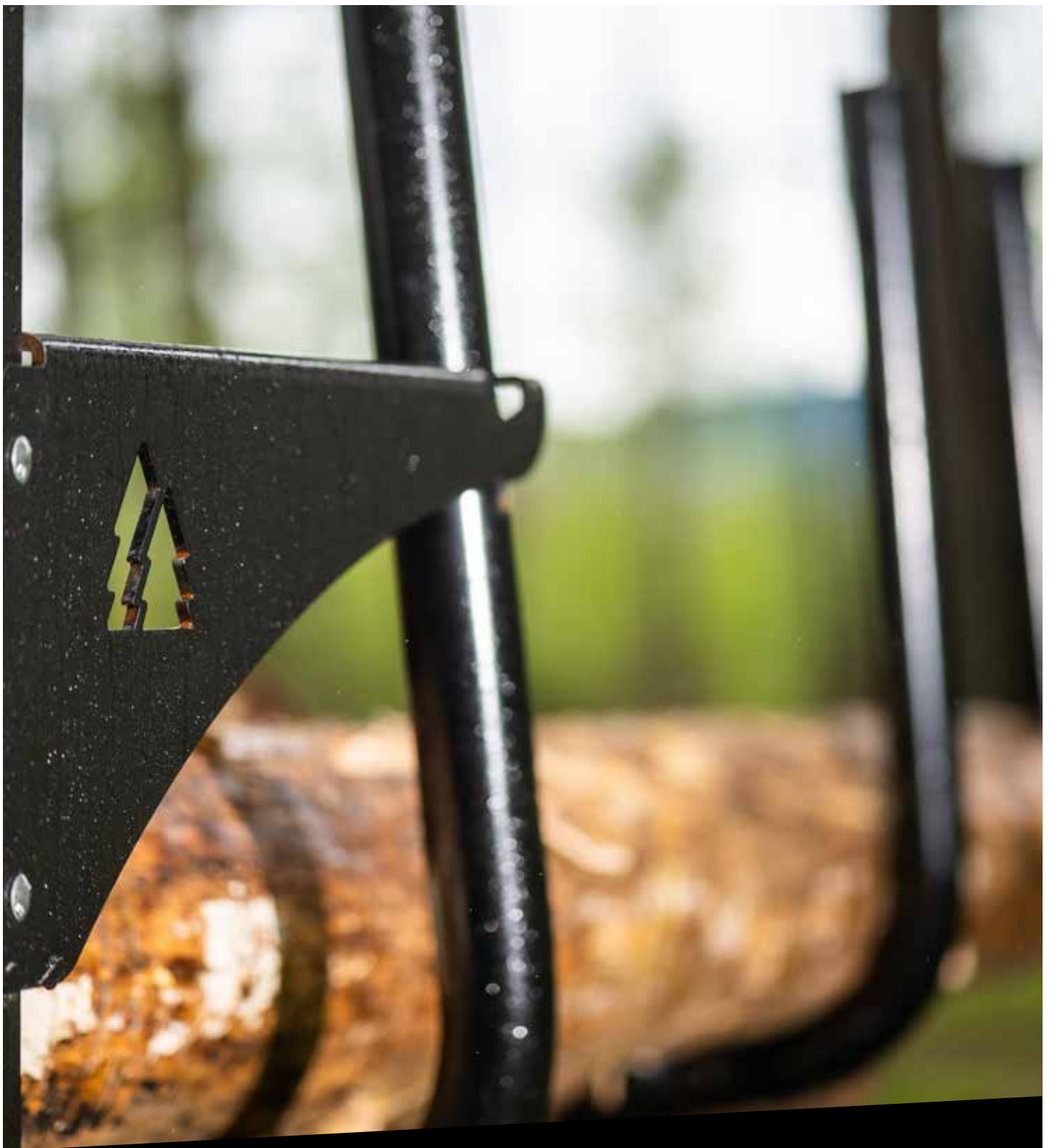


FTG | **MOHEDA**



A GOOD DAY IN THE FOREST...



FOREST TECHNOLOGY GROUP

Forest Technology Group supports forestry workers with unique, high-quality products for harvesting, transporting and processing timber. We design, develop and produce functional forestry trailers and cranes for foresters.

Forest Technology Group – FTG – brings together five strong and independent brands, each with unique characteristics to match its target group.

Our combined range spans everything from forestry trailers, cranes and forestry accessories to ground preparation tools, road drags and harvester heads – all designed to work both hard and efficiently in the forest.





...IS A DAY WHEN EVERYTHING SIMPLY WORKS!

As a forester, you are entitled to make demands. Your vehicles and equipment must, quite simply, work to ensure safe and efficient harvesting.

Forestry trailers from Moheda meet such demands. Smart, sturdy machines that work hard and intensively even when faced with the toughest conditions.

FTG Moheda delivers what you need for a good day in the forest.

A RELIABLE HARD WORKER IN ANY WEATHER

Every Moheda forestry trailer has been developed to withstand rough handling. A sturdy powerhouse with a well-considered design that closely follows the terrain without feeling ungainly. A reliable and flexible hard worker with impressive lifting specifications that simply gets the job done regardless of season or weather.

Our range encompasses forestry trailers for all types of forestry work – from forwarding forest residues, firewood and thinned stands to hauling timber from heavier final logging.

A FORESTRY TRAILER OF YOUR MAKING

A forestry trailer from Moheda is what you make it. With great freedom in choosing each option, you can shape

the trailer to your exact requirements.

You start with our wide range of trailer models with the power, brakes and hydraulics to match your needs. You complete your trailer with diverse options spanning, for example, valve assemblies, cranes, grapples and winches.

HIGHLY RELIABLE – LONG SERVICE LIFE

The total cost of ownership is important. Balancing tight harvesting budgets demands low operating costs and a minimum of maintenance.

Moheda's trailers are made in Sweden and deliver high quality right down to the smallest detail. Our trailers last a long time, incur low repair and service costs and boast favourable resale values.

9 CHOICES FOR YOUR NEW MOHEDA TRAILER

A forestry trailer from Moheda offers great freedom of choice. With your own choice of trailer characteristics, equipment and accessories, you can create the perfect trailer for you.



**1****TRAILER**

We can offer trailers from 9 to 15 tonnes, both driven and non-driven. The choice of trailer *size* is based on the performance of the tractor and your needs to ensure a tractor-trailer combination best suited to the terrain.

2**POWER**

For hilly terrain with waterlogged areas, you may need a *driven* trailer. For trailers from 10 tonnes and upwards, Robson drive is often chosen, with a roller powering the wheels hydraulically. For our 12-tonne trailer, we offer *hub drive* on the rear wheel set as an alternative.

3**BRAKES**

For steep terrain and transporting loads, we recommend a trailer with *brakes*. We can offer both *disc brakes* and *drum brakes*.

4**HYDRAULIC SYSTEM**

If the tractor's hydraulic flow is insufficient, you have the option of adding a separate *hydraulic system* for increased capacity.

5**CRANE**

For each of our trailers, we offer a number of well-considered *crane* options. The crane is selected based on reach and lifting capacity requirements.

6**ROTATOR AND GRAPPLE**

For each crane, we have a number of *rotator* and *grapple* recommendations. We also offer the option of choosing from a number of alternative grapples and buckets. Yet another option is a *braked link*, which reduces any jolting of the grapple.

7**VALVE ASSEMBLIES**

We have many *valves* and *control systems* to choose from, ranging from simpler mechanical valves to more advanced, fully electric control systems.

8**WINCHES**

A *winch with radio control* is chosen for almost all trailers today. We offer two alternatives. Our 1410 model with 1400 kg of traction (6 mm x 35 m cable) is the most popular, although we also have our 1810 model with 1800 kg of traction (8 mm x 30 m cable).

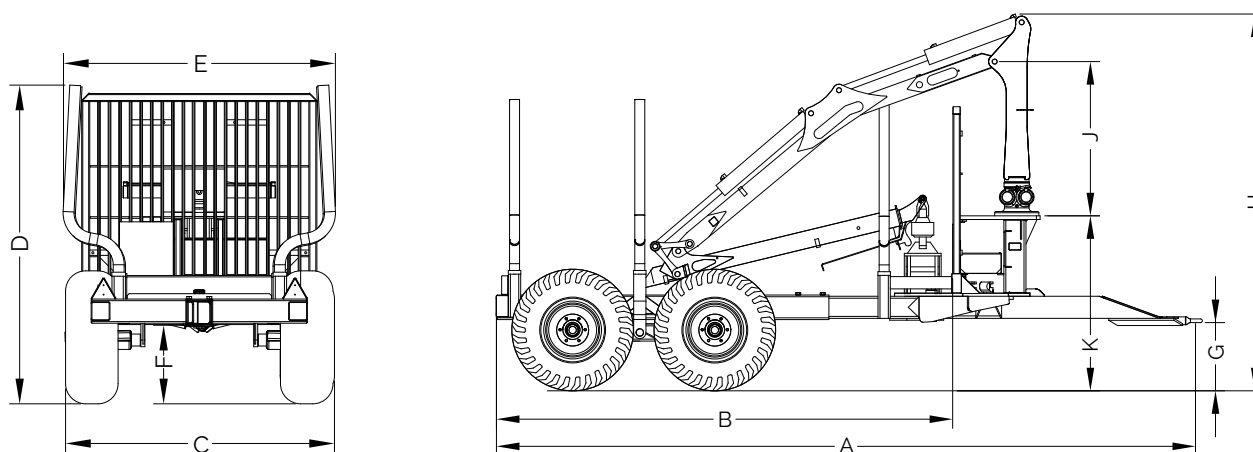
9**COMMON OPTIONS**

Examples of other common options include support legs, toolboxes, chainsaw holders and work lights.

1. TRAILER

TRAILERS FOR HARD WORK IN ANY WEATHER

The Nordic climate varies greatly between seasons, which places special demands on function and ergonomics. Moheda's Swedish-made forestry trailers are designed to work efficiently in any weather, offering great alternatives for both professional and amateur foresters.



Trailer	Crane	Wheel size	A	B	C	D	E	F	G	H	J	K
M91	K31T	400/60x15,5	5500	3740	2040	2030	1850	510	500	2775	1220	1185
M101	K31T/K41T	400/60x15,5	5350-5950	3150-3750	2140	2200	2100	560	500	2840	1220	1250
M101	K31T/K41T	15/70x18	5350-5950	3150-3750	2100	2270	2100	620	500	2860	1220	1270
M101	M41T	400/60x15,5	5350-5950	3150-3750	2140	2200	2100	560	500	2880	1260	1250
M101	M41T	15/70x18	5350-5950	3150-3750	2100	2270	2100	620	500	2900	1260	1270
M101 4WD	K41T	400/55x22,5	5100-5700	3130-3730	2200	2350	2100	690	500	2875	1220	1285
M101 4WD	M41T	400/55x22,5	5100-5700	3130-3730	2200	2350	2100	690	500	2915	1260	1285
M121	M41T	15/70x18	5400-6000	3400-4000	2180	2500	2210	660	500	2915	1260	1285
M121	M41T	500/50x17	5400-6000	3400-4000	2315	2500	2210	650	500	2915	1260	1285
M121	M51T	500/45x22,5	5400-6000	3400-4000	2325	2500	2210	675	500	3080	1380	1285
M121 4WD	M41T	500/45x22,5	5360-5960	3350-3950	2300	2500	2210	690	500	2915	1260	1285
M121 4WD	M51T	500/45x22,5	5360-5960	3350-3950	2300	2500	2210	690	500	3080	1380	1285
M121 ND2	M41T	500/45x22,5	5500-5885	3480-4080	2360	2500	2210	650	500	2915	1260	1285
M121 ND2	M51T	500/45x22,5	5500-5885	3480-4080	2360	2500	2210	650	500	3080	1380	1285
M141 4WD	M51T	500/60x22,5	6000-6450	3900-4350	2425	2880	2390	540	500	3305	1380	1510
M141 4WD	M51T	600/50x22,5	6000-6450	3900-4350	2525	2880	2390	540	500	3305	1380	1510
M151 4WD	M81T/M81DT	700/40x22,5	6000-6450	3900-4350	2625	2880	2390	540	500	3600	1550	1510



TECHNICAL DATA

All technical data for our trailers can be found on our website. Scan the QR code to go directly to the web page.



NON-DRIVEN TRAILERS



MOHEDA M91

The M91 has a 9-tonne load capacity and is Moheda's smallest forestry trailer.

An agile trailer suited to smaller tractors that is equipped as standard with 400/60x15.5 wheels, drawbar steering and telescopic support legs.

Load capacity (kg)	9000
Load space (m ²)	2
Weight (kg)	1115
Tyre size	400/60x15.5



MOHEDA M101

The M101 is an agile trailer with a 10-tonne load capacity well suited to most farms. Suitable for both farm and forestry use.

The trailer is equipped as standard with 400/60x15.5 wheels and drawbar steering. The load space up to the gate measures 2.3 m².

Load capacity (kg)	10000
Load space (m ²)	2.3
Weight (kg)	1395
Tyre size	400/60x15.5



MOHEDA M121

The M121 has a 12-tonne load capacity and is one of the larger trailers in our range.

The generous load capacity makes this trailer an ideal choice for both private forest owners and forestry contractors.

The M121 is equipped as standard with 15/70x18 wheels and drawbar steering. The load space up to the gate measures 2.7 m².

Load capacity (kg)	12000
Load space (m ²)	2.7
Weight (kg)	1860
Tyre size	15/70x18



MOHEDA M141

The M141 has a 15-tonne load capacity and is Moheda's largest forestry trailer. The M141 is the perfect choice for both larger forest owners and forestry contractors.

Equipped as standard with 500/60x22.5 wheels and drawbar steering. The load space up to the gate measures 3.3 m².

Load capacity (kg)	15000
Load space (m ²)	3.3
Weight (kg)	2900
Tyre size	500/60x22.5



DRIVEN TRAILERS



MOHEDA M101 - 4WD

The M101 4WD is an agile trailer with a 10-tonne load capacity that, thanks to its hydraulic drive, can easily traverse demanding terrain. Suitable for both farm and forestry use.

The M101 4WD is equipped as standard with 400/55x22.5 wheels and drawbar steering. The load space up to the gate measures 2.3 m².

Load capacity (kg)	10000
Load space (m ²)	2.3
Weight (kg)	2080
Tyre size	400/60x15.5



MOHEDA M121 - 4WD

The M121 4WD is a bestseller among driven trailers with a load capacity of 12 tonnes. Thanks to its hydraulic drive, this trailer makes easy work of challenging terrain.

Equipped as standard with 500/45x22.5 wheels and drawbar steering. The load space up to the gate measures 2.7 m².

Load capacity (kg)	12000
Load space (m ²)	2.7
Weight (kg)	2310
Tyre size	500/45x22.5



MOHEDA M121 - 2ND

The M121 2ND is a *hub-driven* trailer with a 12-tonne load capacity.

The trailer can traverse demanding terrain with the aid of its hydraulic hub drive. The hub drive also provides the option of fitting tracks or chains. An ideal alternative for private forest owners and forestry contractors.

Equipped with 500/45x22.5 wheels and drawbar steering. The load space up to the gate measures 2.7 m².

Load capacity (kg)	12000
Load space (m ²)	2.7
Weight (kg)	2800
Tyre size	500/45x22.5



MOHEDA M141/151 - 4WD

The M141 4WD and the M151 4WD are FTG Mohedas largest driven trailers with a 15-tonne load capacity.

They differ in terms of traction (3150/4000 kg) and wheel size, with the M141 4WD equipped with 500/60x22.5 wheels as standard. The M151 4WD is equipped with 600/55x22.5 wheels.

The load space up to the gate measures 3.3 m².

Load capacity (kg)	15000
Load space (m ²)	3.3
Weight (kg)	3500
Tyre size	500/60x22.5 600/55x22.5



2. DRIVE

DRIVEN OR NON-DRIVEN? LET THE TERRAIN DECIDE!

The forest presents various terrain challenges, making it difficult to maneuver. FTG Moheda forestry trailers address this by providing high ground clearance, making navigation easier. Our range includes both driven and non-driven trailers. While non-driven trailers are suitable for lighter terrain, driven trailers are recommended for hilly, wet terrain as they reduce strain on the tractor and minimize the risk of getting stuck.

Our non-driven trailers boast a durable and well-proven design, popular with our customers for generations. The high ground clearance and the ingenious bogie design make climbing over tree stumps and rocks easier.

In more demanding terrain, a driven Moheda trailer might prove necessary. The integrated drive system helps power your tractor-trailer combination through the forest without getting stuck.

Robson drive, in which a roller powers the wheels hydraulically, performs impressively regardless of the terrain and ensures great tractor-trailer interaction.

Our model M121-2ND is equipped with hub drive on the rear wheel set. Hub drive also enables you to use chains or tracks in particularly demanding terrain.

The drive is easily engaged and disengaged via an electrically controlled valve that is operated by switches in the tractor. With the drive disengaged, the trailer can move freely.

Moheda's driven trailers have held a leading market position for decades, offering you peace of mind in your choice of trailer.

NON-DRIVEN TRAILERS



FTG Moheda has a unique easy-climb bogie that provides lower ground pressure on the front wheel set, allowing the trailer to easily pass over obstacles.

ROBSON-DRIVE



Robson drive ensures a powerful, all-wheel drive trailer with high traction and a reliable build.

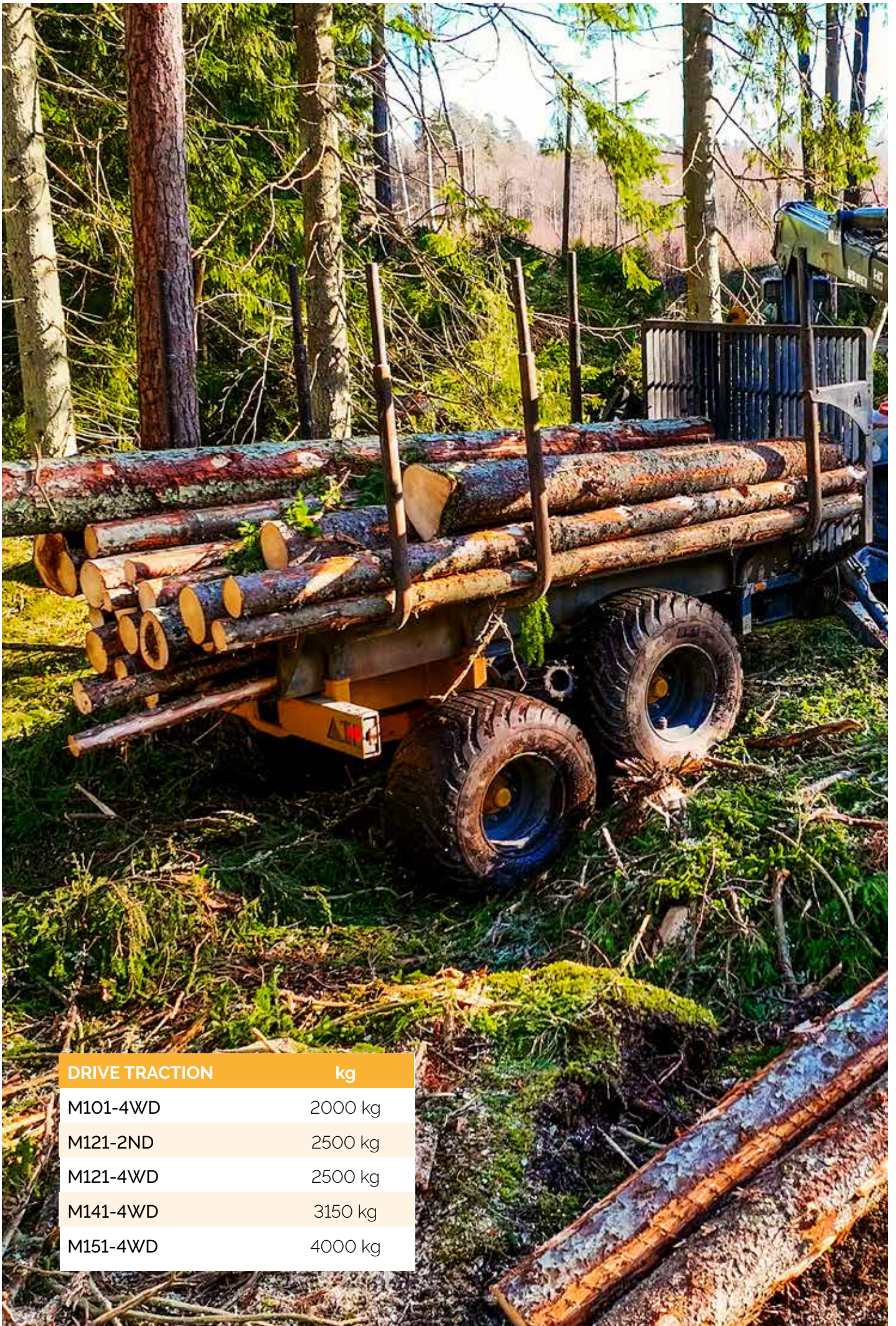
Drive rollers adapted to tread patterns ensure smooth operation and superb manoeuvrability.

HUB DRIVE



Hub drive provides powerful, two-wheel drive and the ability to use chains or tracks in particularly demanding terrain.

The design combines our easy-climb bogie with *Black Bruin wheel motors* on the rear wheels.



DRIVE TRACTION	kg
M101-4WD	2000 kg
M121-2ND	2500 kg
M121-4WD	2500 kg
M141-4WD	3150 kg
M151-4WD	4000 kg

3. BRAKES

TRAILER BRAKES FOR INCREASED SAFETY

All our forestry trailers can be equipped with braking systems, either disc brakes or drum brakes. Trailer brakes provide increased safety, both on and off the road. When hauling heavy loads, the brakes also help reduce any strain on the tractor.

A trailer fitted with *disc brakes* offers a simple and easily serviced design, fit for any forest conditions.

The brake discs and calipers are exposed and easily accessed, which reduces the risk of dirt, mud and moisture accumulating and impairing braking performance. This allows trailers with disc brakes to be used in the most demanding terrain.

Drum brakes provide impressive braking performance thanks to the large surface area of the brake pads.

Drum brakes are based on a technology that uses encapsulated systems and are an excellent alternative when the trailer is used for road transport and loading by the roadside.



4. HYDRAULIC SYSTEM

HYDRAULIC SYSTEM – FOR GREATER HYDRAULIC FLOW

In cases where the tractor's hydraulic flow is insufficient for the preferred forestry trailer, a separate hydraulic system mounted on the trailer may be necessary. Choose between various types of pumps depending on trailer size and capacity.



GEAR PUMP 70 L/MIN

Item no FA0067

M91	M101	M101 4WD	M121
M121 4WD	M121 2ND	M141 4WD	M151 4WD

GEAR PUMP 90 L/MIN

Item no FA0063

M91	M101	M101 4WD	M121
M121 4WD	M121 2ND	M141 4WD	M151 4WD

PISTON PUMP 81L/MIN

Item no. FA0550
Can be mounted
on drawbar

M91	M101	M101 4WD	M121
M121 4WD	M121 2ND	M141 4WD	M151 4WD

PISTON PUMP 101L/MIN

Item no. FA0546
Can be mounted on
drawbar

M91	M101	M101 4WD	M121
M121 4WD	M121 2ND	M141 4WD	M151 4WD

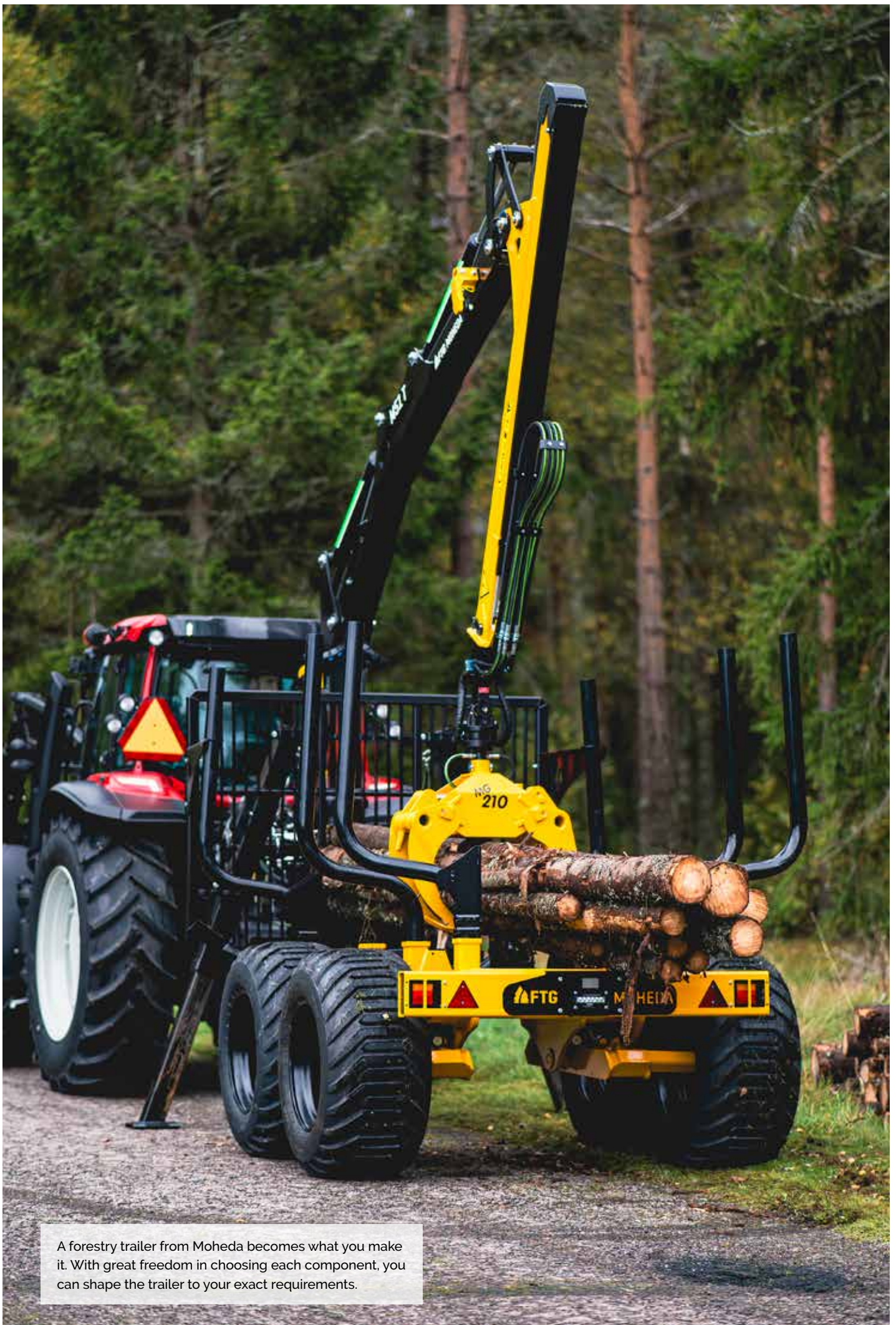


LS-PUMP 130L/MIN

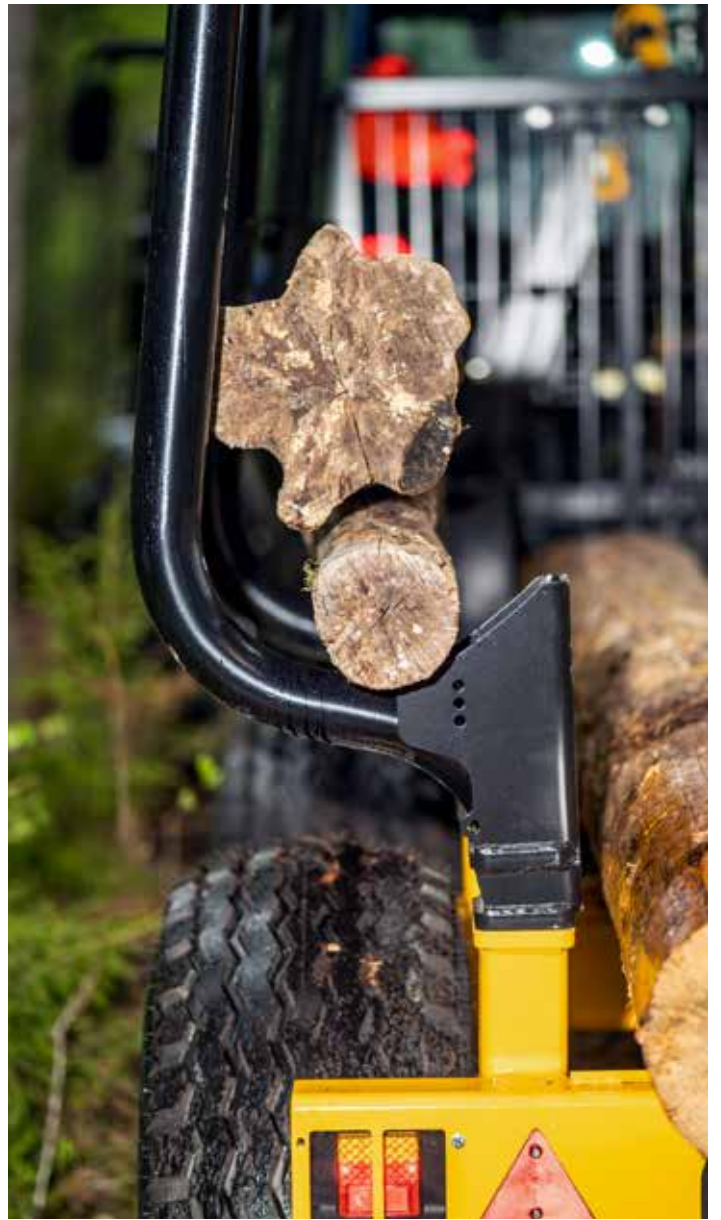
Item no FA0421
Drawbar mounting
only

M91	M101	M101 4WD	M121
M121 4WD	M121 2ND	M141 4WD	M151 4WD





A forestry trailer from Moheda becomes what you make it. With great freedom in choosing each component, you can shape the trailer to your exact requirements.



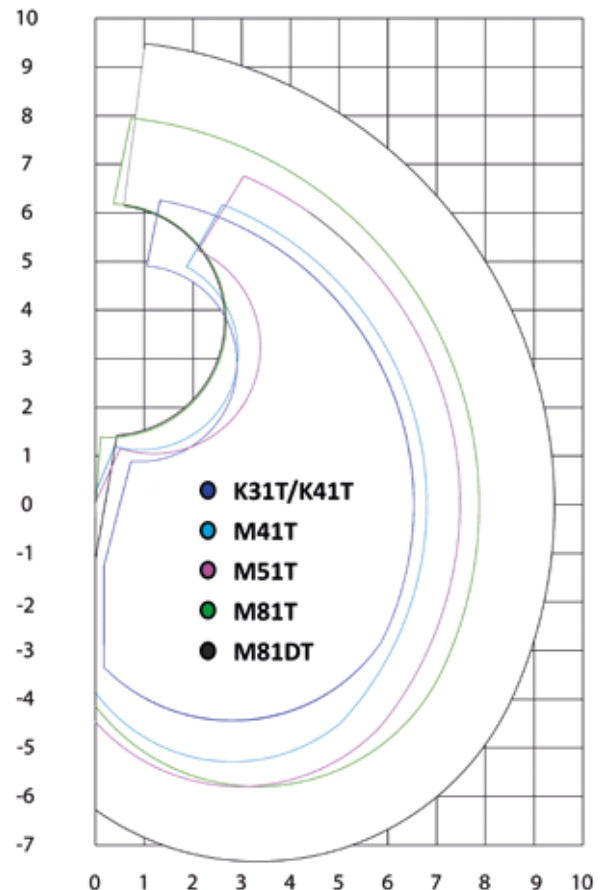
5. CRANE

POWERFUL CRANES WITH A LONG REACH

Moheda cranes are known for their powerful, reliable, and versatile qualities. The range includes cranes with reaches from 6.5 meters up to 9.4 meters, offering great flexibility in terms of valve assemblies, grapples, and other equipment. Most Moheda cranes have the cylinder mounted on the top side of the lifting arm, providing greater lifting capacity and protection against logs and impacts. The cranes also feature a smart linkage system in the knuckle, ensuring smooth and precise crane movements.

- Moheda trailers come with various valve options and control systems, including manual, servo-controlled, or electrically controlled.
- Superb solution for parking the crane with the knuckle against the trailer, reducing wear on the slewing motor and linkages during transport. This setup provides a low centre of gravity and good handling when driving with an empty trailer.
- The design with the lifting cylinder above the lifting arm protects the cylinder and optimises lifting capacity. A Moheda crane gets stronger the higher you lift the load!
- Stable telescopes with large sliding pads provide extra reach and safe operation. The hose guard keeps the hoses in place during operation.
- Knuckles with linkages provide smooth movement patterns and steady crane movements. Well-considered hose routing through the knuckle ensures reliable protection in demanding situations.
- The hose bridge and hose grommets on the crane pillar prevent strain on the hose and keep it in place without unnecessary wear. Greater reliability and reduced service requirements.
- Smart hose routing at the crane tip for protection and reduced wear. A damper link ensures safe operation during long shifts.

Metres



Movement chart

TECHNICAL DATA

All technical data for our cranes can be found on our website. Scan the QR code to go directly to the page.



Trailer/Crane	K31T	K41T	M41T	M51T	M81T	M81DT
M91	•					
M101	•	•	•			
M101-4WD	•	•	•			
M121		•	•	•		
M121-4WD		•	•	•		
M121-2ND		•	•	•		
M141-4WD				•		
M151-4WD					•	•



MOHEDA K31T

The Moheda K31T is intended for use with the Moheda M91 and M101 trailers. A crane for anyone who needs a long reach.

The K31T is equipped with a telescopic arm with a reach/lifting capacity of 6.5 m/260 kg. It has a linkage system and top-mounted lifting cylinder for better movement patterns. Lifting torque of 25 kNm.

Reach (m)	6.5
Lifting torque, gross (kNm)	25
Lifting capacity at max. reach (kg)	260
Lifting capacity, 4 m (kg)	670
Slewing torque (kNm)	8.5
Slewing angle	360°
Rec. oil flow (L/min)	25-35
Weight w/o grapple and rotator (kg)	620



MOHEDA K41T

The Moheda K41T is intended for use with the Moheda M101, M121, M101-4WD and M121-4WD trailers. A crane for anyone who needs extra reach.

The K41T is equipped with a telescopic arm with a reach/lifting capacity of 6.5 m/385 kg. It has a linkage system and top-mounted lifting cylinder for better movement patterns. Lifting torque of 33 kNm.

Reach (m)	6.5
Lifting torque, gross (kNm)	33
Lifting capacity at max. reach (kg)	385
Lifting capacity, 4 m (kg)	920
Slewing torque (kNm)	8.5
Slewing angle	360°
Rec. oil flow (L/min)	30-40
Weight w/o grapple and rotator (kg)	640



MOHEDA M41T

The M41T is a crane for anyone who needs extra reach and power. This crane is equipped with a telescopic arm with a reach/lifting capacity of 6.9 m/450 kg.

It has a linkage system and top-mounted lifting cylinder for better movement patterns and boasts a lifting torque of 43 kNm. The angled lifting arm can be parked firmly against the trailer.

Reach (m)	6.9
Lifting torque, gross (kNm)	43
Lifting capacity at max. reach (kg)	450
Lifting capacity, 4 m (kg)	900
Slewing torque (kNm)	11
Slewing angle	360°
Rec. oil flow (L/min)	35-50
Weight w/o grapple and rotator (kg)	720



MOHEDA M51T

The Moheda M51T is a powerful crane with a long reach.

This crane is equipped with a telescopic arm with a reach/lifting capacity of 7.5 m/500 kg. It has a linkage system and top-mounted lifting cylinder for better movement patterns and boasts a lifting torque of 55 kNm.

The angled lifting arm can be parked firmly against the trailer.

Reach (m)	7.5
Lifting torque, gross (kNm)	55
Lifting capacity at max. reach (kg)	500
Lifting capacity, 4 m (kg)	1100
Slewing torque (kNm)	16
Slewing angle	360°
Rec. oil flow (L/min)	40-60
Weight w/o grapple and rotator (kg)	740





MOHEDA M81T

The Moheda M81T is intended for use with the *Moheda M151-4WD* but can also be mounted on a tractor or a medium-sized forestry machine.

The M81T has been improved as regards reach, lifting torque, slewing torque and movement patterns.

The crane has a *single telescope* with well-protected hose routing.

Reach (m)	7.8
Lifting torque, gross (kNm)	81
Lifting capacity at max. reach (kg)	700
Lifting capacity, 4 m (kg)	1450
Slewing torque (kNm)	21
Slewing angle	360°
Rec. oil flow (L/min)	70-90
Weight w/o grapple and rotator (kg)	1320



MOHEDA M81DT

The Moheda M81DT is intended for use with the *Moheda M151-4WD* but can also be mounted on a tractor or a medium-sized forestry machine. The DT model has a newly developed *double telescope* with well-protected *internal hose routing*.

The M81DT has seen considerable improvement as regards key characteristics such as reach, lifting torque, slewing torque and movement patterns.

Reach (m)	9.4
Lifting torque, gross (kNm)	81
Lifting capacity at max. reach (kg)	500
Lifting capacity, 4 m (kg)	1250
Slewing torque (kNm)	21
Slewing angle	360°
Rec. oil flow (L/min)	70-90
Weight w/o grapple and rotator (kg)	1400



6. ROTATORS AND GRAPPLES

GRAPPLES AND BUCKETS TAKE A FIRM GRIP ON THE LOAD

Moheda provides a wide range of rotators, grapples, and buckets to ensure a secure grip on the load, regardless of the chosen trailer or type of harvesting. We offer a variety of rotators, rotator links, timber grapples, and buckets.



ROTATOR CR300

Item no KA2690

K3TT	K4TT	M41T	M51T
M81T	M81DT		



ROTATOR CR400

Item no KA2692

K3TT	K4TT	M41T	M51T
M81T	M81DT		



ROTATOR CR400F

Item nor KA2693

K3TT	K4TT	M41T	M51T
M81T	M81DT		



ROTATOR GV6

Item no KA1987

K3TT	K4TT	M41T	M51T
M81T	M81DT		



ROTATOR LINK UNBROKEN (CR300/CR400)

CR300-Item no MB21796
CR400-Item no MB21797

K3TT	K4TT	M41T	M51T
M81T	M81DT		



ROTATOR LINK SINGLE BRAKED (CR300/400)

Item no KA2691

K3TT	K4TT	M41T	M51T
M81T	M81DT		



ROTATOR LINK SINGLE BRAKED (GV 6)

Item no KA2012

K3TT	K4TT	M41T	M51T
M81T	M81DT		



ROTATOR LINK DOUBLE BRAKED (GV 6)

Item no K1985

K3TT	K4TT	M41T	M51T
M81T	M81DT		



**TIMBER GRAPPLE
FB160**

Item no KA1653

K3TT	K4TT	M41T	M5TT
M81T	M81DT		



**BRASH GRAPPLE
FB160S**

Item no KA2779

K3TT	K4TT	M41T	M5TT
M81T	M81DT		



**TIMBER GRAPPLE
FB190**

Item no KA1692

K3TT	K4TT	M41T	M5TT
M81T	M81DT		



**TIMBER GRAPPLE
FB190WF**

Item no KA1918

K3TT	K4TT	M41T	M5TT
M81T	M81DT		



**BRASH GRAPPLE
FB190S**

Item no KA2780

K3TT	K4TT	M41T	M5TT
M81T	M81DT		



**TIMBER GRAPPLE
G210S (49/59 MM)**

Item no M22140 (49mm)
Item no M22140-1 (59mm)

K3TT	K4TT	M41T	M5TT
M81T	M81DT		



**BRASH GRAPPLE
G210SR (49/59 MM)**

Item no MB21820-2 (49mm)
Item no M22140-2 (59mm)

K3TT	K4TT	M41T	M5TT
M81T	M81DT		



**TIMBER GRAPPLE
FB260**

Item no KA1862

K3TT	K4TT	M41T	M5TT
M81T	M81DT		

DATA GRAPPLES

	FB 160	FB160S	FB 190	FB190WF	FB 190S	G 210S	G 210SR	FB 260
Item no.	KA1653	KA2779	KA1692	KA1918	KA2780	M22140 M22140-1	MB21820-2 M22140-2	KA1862
Grapple size m ²	0.16	0.16	0.195	0.195	0.19	0.21	0.21	0.26
Max. grapple width (mm)	1010	1020	1200	1200	1270	1200	1200	1300
Min. grapple width (mm)	50	50	50	50	50	70	70	50
Height (mm)	402	401	416	400	420	786	790	500
Width (mm)	217	214	272	295	220	310	310	300
Cylinder size (mm)	60/30	60/30	63/32	63/32	63/32	70/40	70/40	80/40
Weight (kg)	55	65	68	81	73	110	110	115
Rotator axle (mm)	49	49	49	flange	49	49/59	49/59	flange
Force at teeth (kN)	7,5	7,5	9	9	9	8	8	12



GRAPPLE BUCKET G180GS (400 MM WIDE)

Item no KA1882

K3TT	K4TT	M41T	M51T
M81T	M81DT		

GRAPPLE BUCKET G180GS (625 MM WIDE)

Item no M22450

K3TT	K41T	M41T	M51T
M81T	M81DT		

GRAPPLE BUCKET FB120V

Item no KA2029

K3TT	K41T	M41T	M51T
M81T	M81DT		



BUCKET KIT

	Fits: G 160L	G 210S	G 260L	FB 160	FB 190	FB 260
Item no.	M22312	M22317	M22316	M22322	M22323	KA2563
Volume (l)	110	190	200	110	120	150
Length (mm)	810	800	820	582	600	750
Height (mm)	380	470	520	460	460	550
Width (mm)	480	630	80	560	590	650
Weight (kg)	45	70	80	33	35	45



**ADAPTER PLATE
49 MM**

Item no KA1863

K31T	K41T	M41T	M51T
M81T	M81DT		

**ADAPTER PLATE
59 MM**

Item no KA2039

K31T	K41T	M41T	M51T
M81T	M81DT		

**ADAPTER
49 MM TO 59 MM**

Item no KA1759

K31T	K41T	M41T	M51T
M81T	M81DT		

**ADAPTER
59 MM TO 49 MM**

Item no FA0789

K31T	K41T	M41T	M51T
M81T	M81DT		

7. VALVE ASSEMBLIES

VALVE ASSEMBLIES AND CONTROL SYSTEMS MATCHING YOUR NEEDS

When selecting valve assemblies and control systems, it's important to consider factors such as ergonomics, handling, and tractor installation. However, we offer a valve assembly to meet every customer's needs. Our PCL and EHC valves are conveniently mounted in the crane base to ensure a low center of gravity and maximum protection. With the help of the valve rack, the valve can be easily removed for servicing.



**MULTI LEVER VALVE
HCD3M**

K31T K41T M41T M51T
M81T M81DT



**TWO LEVER VALVE
HCD3M**

K31T K41T M41T M51T
M81T M81DT



**LIGHT WIEGHT VALVE
HCD3M**

K31T K41T M41T M51T
M81T M81DT



**PCL VALVE
EL. ON/OFF**

K31T K41T M41T M51T
M81T M81DT



**PCL VALVE
PROP**

K31T K41T M41T M51T
M81T M81DT



**EHC VALVE
MINI LEVER**

K31T K41T M41T M51T
M81T M81DT



**EHC VALVE
SCANRECO**

K31T K41T M41T M51T
M81T M81DT



FTG X-ACT CRANE TIP CONTROL



THE FTG XCRANE ADVANCED CRANE TIP (X-ACT) SYSTEM TAKES THE CONTROL OF GRAPPLE LOADING CRANES TO A WHOLE NEW LEVEL.



FTG X-ACT is an intelligent system with sensors on the telescope, boom, lifting arm and slewing motor that constantly notes the position of the crane. Advanced technology then controls the different parts of the crane synchronously to move the grapple to where you want. All you have to do as an operator is to decide whether the tip of the crane should go up or down, forwards or backwards.

With one lever for horizontal and one for vertical movement, the crane is very easy and precise to control. As an operator, you control the tip of the crane directly instead of manoeuvring its individual parts separately.

The FTG X-ACT not only makes crane operation easier, but also provides relief for operators during long working days, while increasing productivity with superior precision.

The FTG X-ACT System is available as an option for the M51T and M81DT cranes.



JOYSTICK MOUNT BRACKET

Item no NB8002302
Valtra 6000



JOYSTICK MOUNT BRACKET

Item no NB37486-0
Valtra N-serie



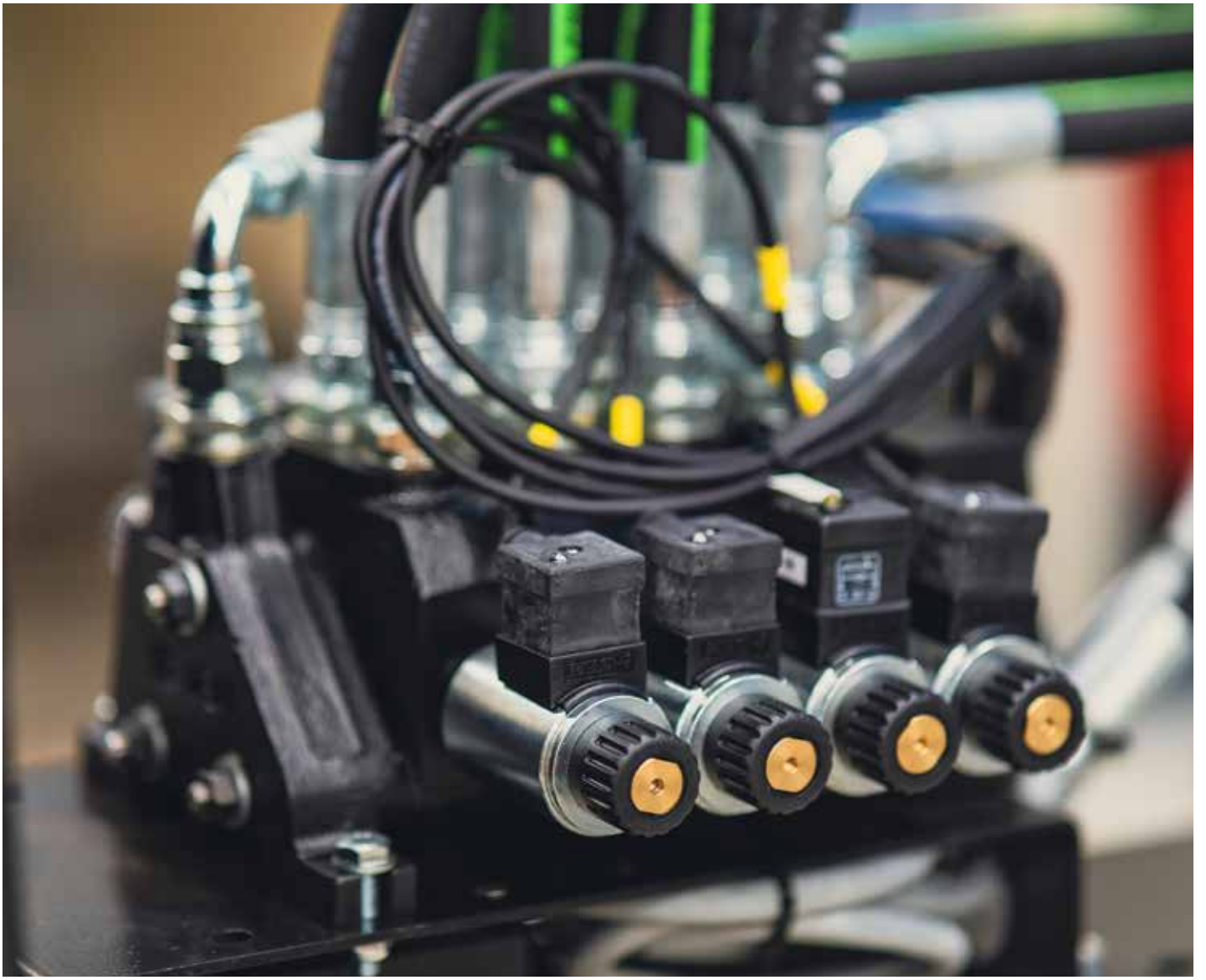
JOYSTICK MOUNT (PAIR)

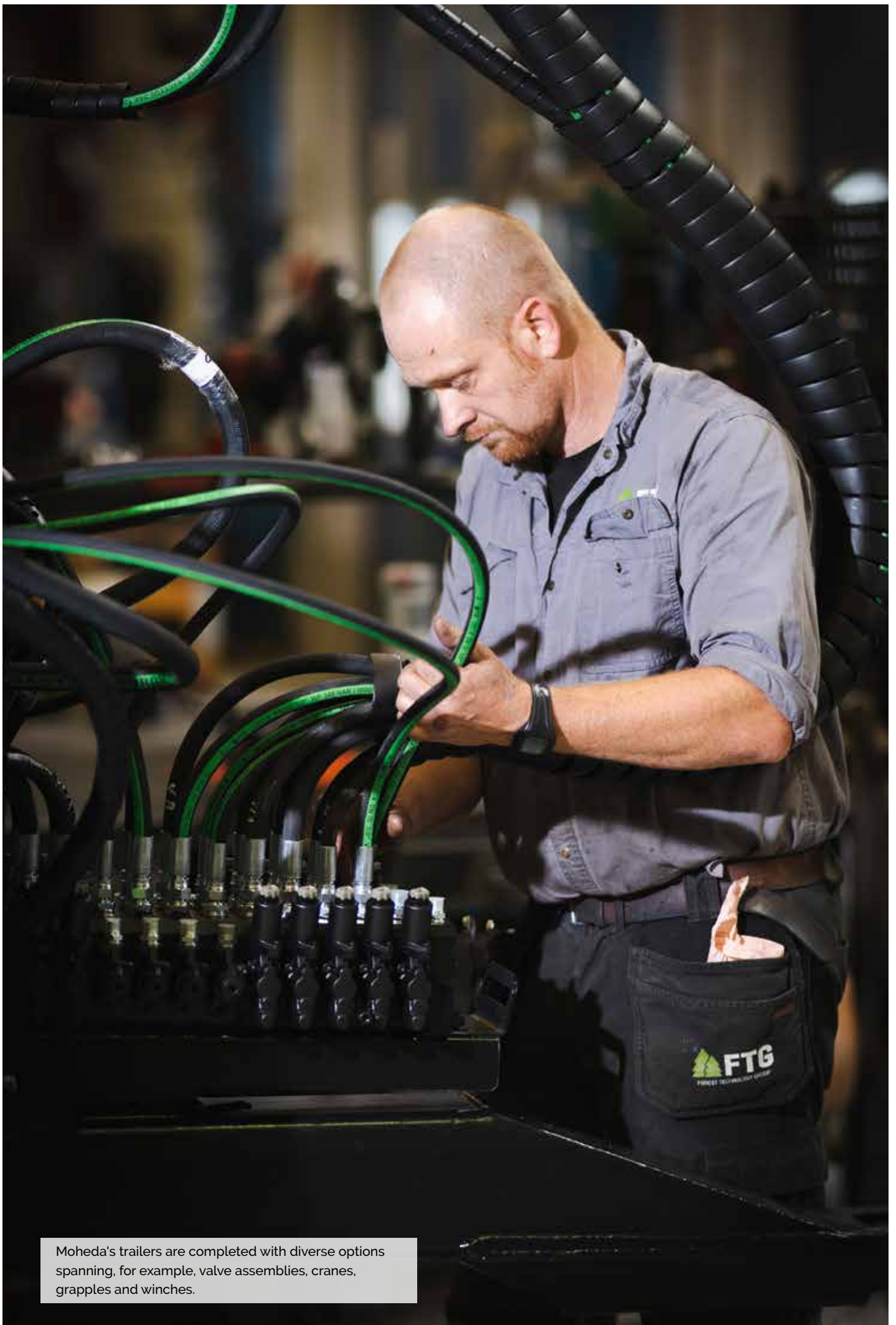
Item no NB8002300



VALVE BRACKET (ARM)

N8002200
Valtra A-serie





Moheda's trailers are completed with diverse options spanning, for example, valve assemblies, cranes, grapples and winches.



8. WINCH

EXTEND YOUR WORKING RANGE WITH A HYDRAULIC WINCH

During your day in the forest, sometimes you need more reach than your crane has to offer. A winch extends the working range of your trailer, quickly and conveniently enabling you to pull stems close enough for the crane arm to reach. We offer a wide range of winch models to choose from based on criteria such as mounting method, lifting capacity and reach.



WINCH MV1410

Item no FA0388

K31T	K41T	M41T	M51T
M81T	M81DT		
M91	M101	M101 4WD	M121
M121 4WD	M121 2ND	M141 4WD	M151 4WD

WINCH MV1810

Item no FA0389

K31T	K41T	M41T	M51T
M81T	M81DT		
M91	M101	M101 4WD	M121
M121 4WD	M121 2ND	M141 4WD	M151 4WD

WINCH KIT MV1410

Item no FA0398
Alternative mounting

K31T	K41T	M41T	M51T
M81T	M81DT		

WINCH KIT MV1810

Item no FA0399
Alternative mounting

K31T	K41T	M41T	M51T
M81T	M81DT		

WINCH MOUNTING KITS														
Item no.	K 31T	K 41T	M 41T	M 51T	M 81T	M 81DT	M 91	M 101	M 101 4WD	M 121	M 121 4WD	M 121 2ND	M 141 4WD	M 151 4WD
FA0392							•							
FA0393							•							
FA0394								•	•	•	•	•	•	•
FA0395								•	•	•	•	•	•	•
FA0396	•	•	•	•	•	•								
FA0397	•	•	•	•	•	•								



**PULLEY
VERTICAL**

Item no MB31360-4



**PULLEY
HANGNING**

Item no MB31360-3



**PULLEY
OPEN**

Item no AA2968



**RADIO CONTROL
FOR WINCH**

Item no M43436
**When purchasing a
 new winch**
 Item no M43436-1
For retrofiting

9. OTHER ACCESSORIES

TRAILER ACCESSORIES FOR THAT LITTLE EXTRA

Small means can make a good day in the forest even better. Smart solutions and well-considered accessories can increase capacity and simplify work.



SUPPORT LEGS HYDRAULIC

Item no M23135

M91	M101	M101 4WD	M121
M121 4WD	M121 2ND	M141 4WD	M151 4WD



SUPPORT LEGS HYDRAULIC

Item no AA3505

M91	M101	M101 4WD	M121
M121 4WD	M121 2ND	M141 4WD	M151 4WD



EXTENSION STAKES 1 PAIR

Item no M44220

M91	M101	M101 4WD	M121
M121 4WD	M121 2ND	M141 4WD	M151 4WD



SEPARATING POLES 1 PAIR

Item no M44210

M91	M101	M101 4WD	M121
M121 4WD	M121 2ND	M141 4WD	M151 4WD



ROTATION STOP

Item no AA8940

M91	M101	M101 4WD	M121
M121 4WD	M121 2ND	M141 4WD	M151 4WD



ASSORTMENT KIT

Item no FA0777

M91	M101	M101 4WD	M121
M121 4WD	M121 2ND	M141 4WD	M151 4WD



HYDRAULIC STAKES

Item no FA0493

M91	M101	M101 4WD	M121
M121 4WD	M121 2ND	M141 4WD	M151 4WD



FORWARDER BUNKS

Item no FA0811

M91	M101	M101 4WD	M121
M121 4WD	M121 2ND	M141 4WD	M151 4WD



TOOL BOXES

Item no	Höger el. vänster	M91	M101	M101 4WD	M121	M121 4WD	M121 2ND	M141 4WD	M151 4WD
AA3610-V	Left	•							
AA3610-H	Right	•							
AA3488-V	Left		•	•	•	•	•		
AA3488-H	Right		•	•	•	•	•		
AA3540	Both		•	•	•	•	•		
AA4055-V	Left							•	•
AA4055-H	Right							•	•



BRUSH PLATES - GALVANISED

	Suitable for	M91	M101	M101 4WD	M121	M121 4WD	M121 2ND	M141 4WD	M151 4WD
FA0782		•							
FA0512			•	•					
FA0513					•	•	•		
AA5249								•	•



SINGLE SLEWING HOUSE

Item no AA2320-2



DUAL SLEWING HOUSE

Item no AA2320-1



DUAL SLEWING HOUSE LARGER MODEL

Item no AA2340-1

Please visit our website or talk to your local dealer for more information about our accessories.





VALVE LIFTER TOOL

Item no KA1014

M91	M101	M101 4WD	M121
M121 4WD	M121 2ND	M141 4WD	M151 4WD



**CHAINSAW
HOLDER**

Item no AA3022-1
For mounting on
support legs

M91	M101	M101 4WD	M121
M121 4WD	M121 2ND	M141 4WD	M151 4WD



**CHAINSAW
HOLDER**

Item no FA0413
For mounting on
crane base

M91	M101	M101 4WD	M121
M121 4WD	M121 2ND	M141 4WD	M151 4WD



**REAR FLASH LIGHTS
(2 PCS)**

Item no KA2427

M91	M101	M101 4WD	M121
M121 4WD	M121 2ND	M141 4WD	M151 4WD



**EXTRA BUNK INCL
STAKES (REAR)**

Item no M44115
M91

M91	M101	M101 4WD	M121
M121 4WD	M121 2ND	M141 4WD	M151 4WD



**EXTRA BUNK INCL
STAKES (REAR)**

Item no AA3861
M91 with tail lights

M91	M101	M101 4WD	M121
M121 4WD	M121 2ND	M141 4WD	M151 4WD



**EXTRA BUNK INCL
STAKES (FRONT)**

Item no AA3679
M101

M91	M101	M101 4WD	M121
M121 4WD	M121 2ND	M141 4WD	M151 4WD



**EXTRA BUNK INCL
STAKES (FRONT)**

Item no AA3520
M121

M91	M101	M101 4WD	M121
M121 4WD	M121 2ND	M141 4WD	M151 4WD



**OIL COOLER
WITH HOSE**

Item no FA0780
M101-M121

M91	M101	M101 4WD	M121
M121 4WD	M121 2ND	M141 4WD	M151 4WD



**OIL COOLER
WITH HOSE**

Item no FA0462
M141-151

M91	M101	M101 4WD	M121
M121 4WD	M121 2ND	M141 4WD	M151 4WD



**THREE POINT HITCH
CAT I**

Item no KA2775

M91	M101	M101 4WD	M121
M121 4WD	M121 2ND	M141 4WD	M151 4WD



**THREE POINT HITCH
CAT II**

Item no KFB200090

M91	M101	M101 4WD	M121
M121 4WD	M121 2ND	M141 4WD	M151 4WD



WORK LIGHTS															
Item no.	Place	K 31T	K41T	M41T	M51T	M81T	M81DT	M91	M101	M101 4WD	M121	M121 4WD	M121 2ND	M 141 4WD	M151 4WD
FA0427	On pillar	•	•	•	•	•	•								
FA0786	On boom	•	•	•											
FA0800	Under boom				•	•	•								
FA0787	Trailer kit (1 rear light + 2 on pillar)							•	•	•	•	•	•	•	•



**THREE POINT HITCH
CAT III**

Item no KA2776

M91	M101	M101 4WD	M121
M121 4WD	M121 2ND	M141 4WD	M151 4WD

**REVERSING
CAMERA KIT**

Item no KA1490
incl light.

M91	M101	M101 4WD	M121
M121 4WD	M121 2ND	M141 4WD	M151 4WD



MANY GOOD REASONS FOR CHOOSING FTG MOHEDA

The skill of crafting high-quality forestry trailers requires time and dedication to master. For over 60 years, we have been honing our expertise and accumulating valuable experience. As a result, we are extremely proud of our product range. Our decades of dedication have allowed us to develop technology that is effective in the forest and meets all necessary requirements.

Moheda's Swedish-made forestry trailers are designed to work hard under Nordic conditions. Our designers have strived with great dedication to make Moheda's products effective, safe and durable.

Personally, we feel that we have made good progress. Today, we have strong offerings for both fulltime professional forestry workers and forest owners who spend a few weeks a year in their forest.

Our trailers can withstand rough handling and heavy loads while our powerful cranes have the strength and reach needed to work the forest both efficiently and profitably.

And our work does not end once the trailer has been delivered. Together with our dealers, we also take responsibility for ensuring that spare parts are readily available and that service and support are always close to hand.



EXPERIENCE FROM THE FOREST

FTG Moheda trailers are developed *by forestry professionals for forestry enthusiasts*. Many of our employees use our products in their own forests. We also maintain an ongoing dialogue with our customers when developing our products to ensure customer satisfaction and great quality.



MADE IN SWEDEN

Our trailers are developed, assembled and tested at our factory in the village of Bäckefors. Situated in the densely forested heart of the Swedish province of Dalmland, this is a place where forestry and forging can trace their roots back to the 1800s. The Moheda brand originates from the Swedish province of Småland and the early 1800s.



HIGH RESALE VALUE

High quality, reliability and a strong brand ensure steady demand for our forestry trailers, factors that also help ensure high resale values.



QUALITY SERVICE

Nearby and readily available service and support. Fast spare parts deliveries and a broad dealer network with proprietary workshops.



