

FTG | MOHEDA M51DT

NEW!



NEW M51DT – LONGER RANGE. GREATER EFFICIENCY.

The new Moheda M51DT with double telescopic boom takes the most popular crane to new heights with a reach of 8.7 metres!

The **Moheda M51DT** is a new powerful crane with **double telescopic arm and a reach of 8.7 metres**. The extra telescopic arm gives you an additional 1.2 metres compared to the M51T. At 8.5 metres, you can still lift 400 kg.

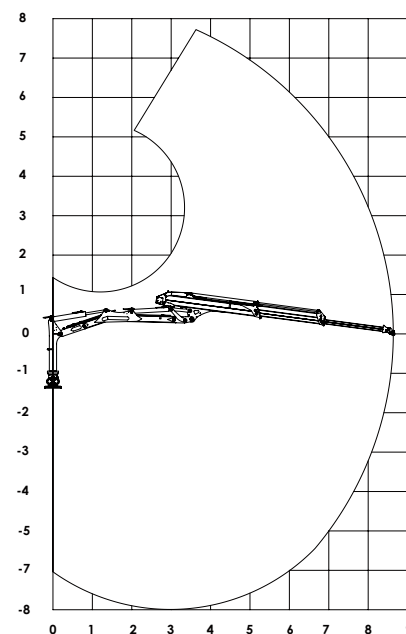
The Moheda M51DT is designed for Moheda trailers M121, M121-4WD, M121-2ND, M141, M141-4WD and M151-4WD trailers.

The link system and top-mounted lift cylinder provide better movement patterns. The 'angled' lift arm gives the crane lifting power where it is most required.

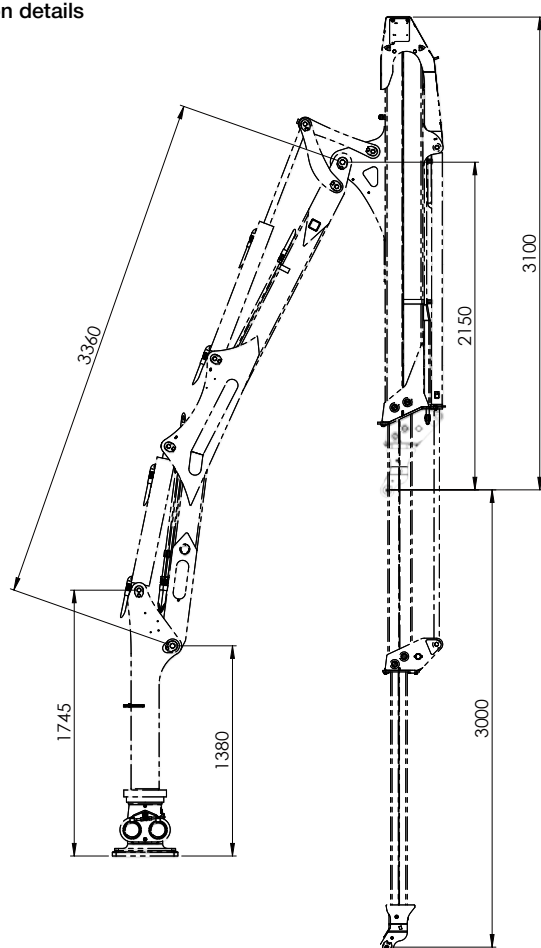
The crane comes standard equipped with a CR400 rotator with braked link, G210S grapple and multi-lever valve. Can also be ordered with FTG X-ACT crane tip control.



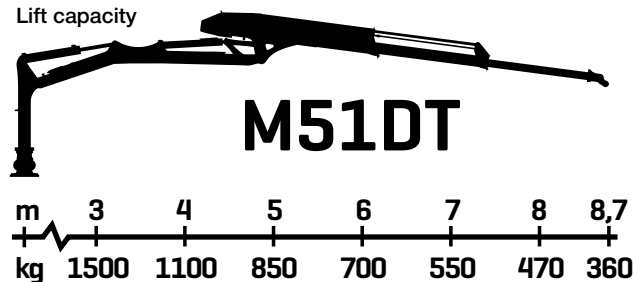
Reach diagram



Dimension details



Lift capacity



Technical data

M51DT	
Reach (m)	8.7
Lift torque (kNm)	55
Lift capacity, max reach (kg)	360
Lift capacity, 4m (kg)	1100
Slew torque (kNm)	16
Slew angle	360 °
Rec. oil flow (l/min) 4	40-60
Working pressure (bar)	180
Weight without grapple and rotator (kg)	1170



Scan the QR code
for more information
about M51DT crane